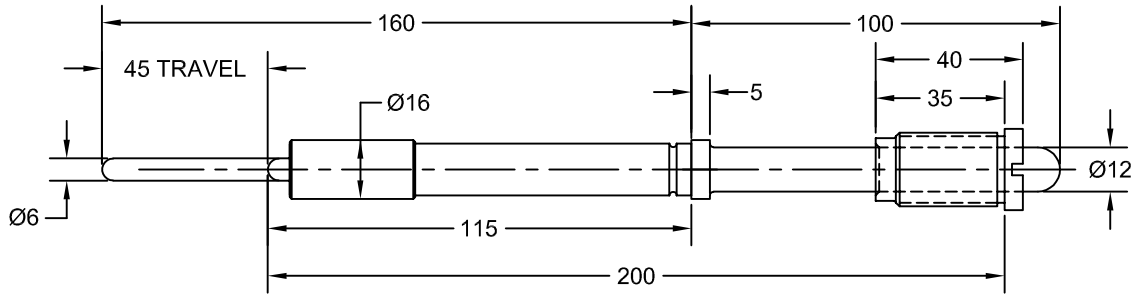


# JOLICO J-B TOOL

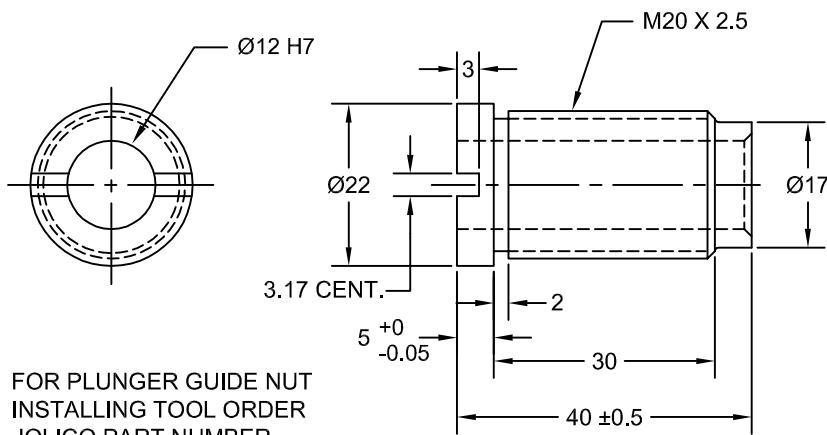
PRINTED COPY IS UNCONTROLLED

## DRAW DIE NITROGEN SPRING PLUNGER ASSEMBLY

USE FOR PART ANGLE UP TO 25° FROM HORIZONTAL



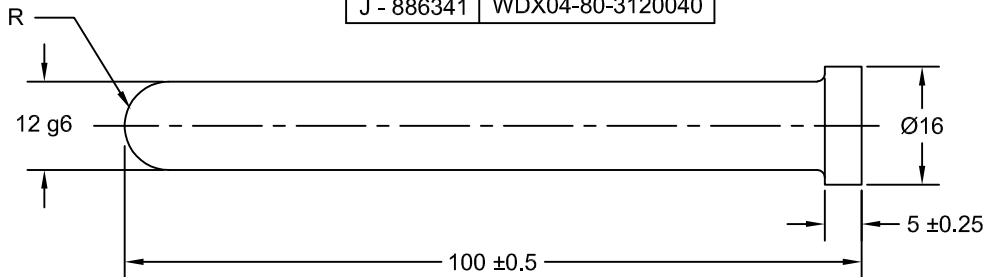
JOLICO ASSEMBLY NUMBER	FORD ASSEMBLY NUMBER	JOLICO PART NAME AND NUMBER		NITROGEN GAS SPRING
		PLUNGER PIN	PLUNGER GUIDE NUT	
J-886339	WDX04-80-31145A	J-886342	J-886341	DADCO E.16.050.020 KALLER E216x1.505-50



FOR PLUNGER GUIDE NUT  
INSTALLING TOOL ORDER  
JOLICO PART NUMBER  
J-886351

### PLUNGER GUIDE NUT

JOLICO NUMBER	FORD PART NUMBER
J - 886341	WDX04-80-3120040



### PLUNGER PIN

JOLICO NUMBER	FORD PART NUMBER
J - 886342	WDX04-80-3112100