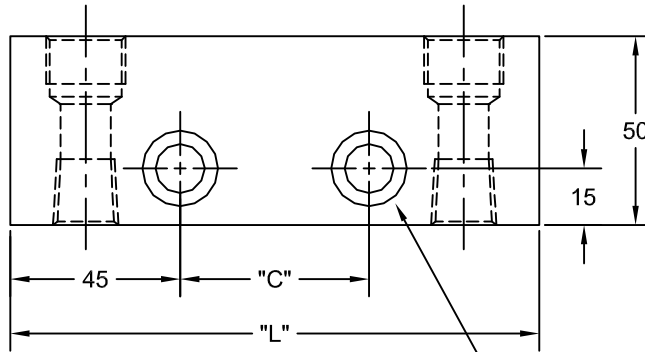


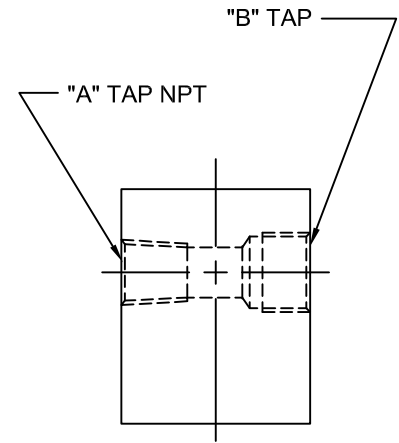
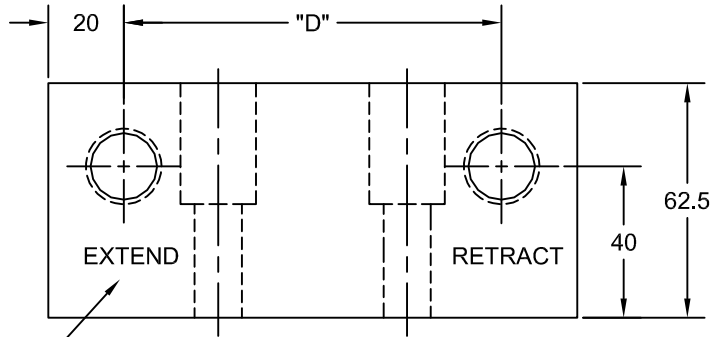
JOLICO J-B TOOL

PRINTED COPY IS UNCONTROLLED

AIR LINE HEADER BLOCK



FOR M12 SOC. HD. CAP SCR.
(2) HOLES



COLOR CODE WILL BE ON
NPT TAP SIDE OF BLOCK.

| JOLICO NUMBER | FORD PART NUMBER | "A" TAP SIZE | "B" TAP SIZE | "C" | "D" | "L" |
|---------------|----------------------|--------------|--------------|-----|-----|-----|
| J - 221196 | WDX35 - 80 - 0714012 | 1/2" NPT | G 1/2" | 50 | 100 | 140 |
| J - 221195 | WDX35 - 80 - 0716112 | 3/4" NPT | G 1/2" | | | |
| J - 221197 | WDX35 - 80 - 0714075 | 3/4" NPT | G 3/4" | | | |
| J - 221202 | WDX35 - 80 - 0716512 | 1/2" NPT | 1/2" NPT | 75 | 125 | 165 |
| J - 221201 | WDX35 - 80 - 0716575 | 3/4" NPT | 3/4" NPT | | | |

ORDERING EXAMPLE

J - 221196 - RY

COLOR CODE (RY) RED / YELLOW

| FIRING SEQUENCE | COLOR CODE | EXTEND | RETRACT |
|-----------------|------------|--------|---------|
| FIRST SEQUENCE | RY | RED | YELLOW |
| SECOND SEQUENCE | BB | BLACK | BLUE |
| THIRD SEQUENCE | GG | GRAY | GREEN |
| FOURTH SEQUENCE | OW | ORANGE | WHITE |
| LAST SEQUENCE | RG | RED | GREEN |