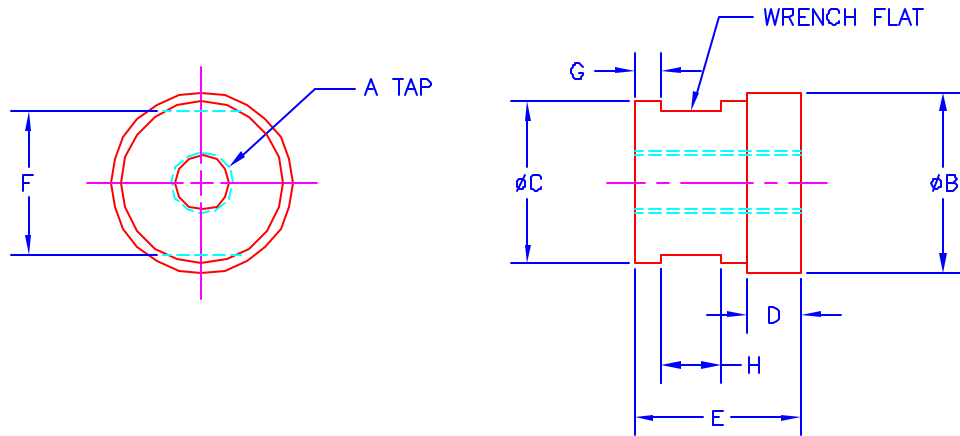


CAM COUPLINGS

PRINTED COPY IS
UNCONTROLLED

THESE COUPLINGS ARE USED WITH THE CAM MOUNTING PLATE,
(SEE PAGE 2) AND A ROD FLANGE MOUNTED AIR CYLINDER.
THE AIR CYLINDER IS FASTENED TO THE SHOE, AND THEN SCREWED
ON THE COUPLING SLIDE INTO THE SLOT OF THE MOUNTING PLATE.



JOLICO NO.	REF. NO.	"A" TAP	øB	øC	D	E	F	G	H
J-79607	DJ3-0107	3/4-10	1.75	1.25	0.38	1.12	1.12	0.12	0.50
J-79608	DJ3-0108	1-8	2.00	1.50	0.50	1.50	1.38	0.18	0.62
J-79609	DJ3-0109	1-1/4-12	2.25	1.75	0.50	1.88	1.62	0.31	0.75
J-79610	DJ3-0110	1-1/2-12	2.50	2.00	0.62	2.25	1.88	0.38	0.75
J-79611	DJ3-0111	2-12	3.00	2.50	0.75	3.00	2.38	0.38	0.88
J-79612	DJ3-0112	2-3/4-12	4.00	3.50	1.00	4.00	3.38	0.38	1.00
J-79613	—————	3/4-16	1.75	1.25	0.38	1.12	1.12	0.12	0.50
J-79614	—————	1-14	2.00	1.50	0.50	1.50	1.38	0.18	0.62
J-79615	—————	1-3/8-12	2.50	2.00	0.62	2.25	1.88	0.38	0.75