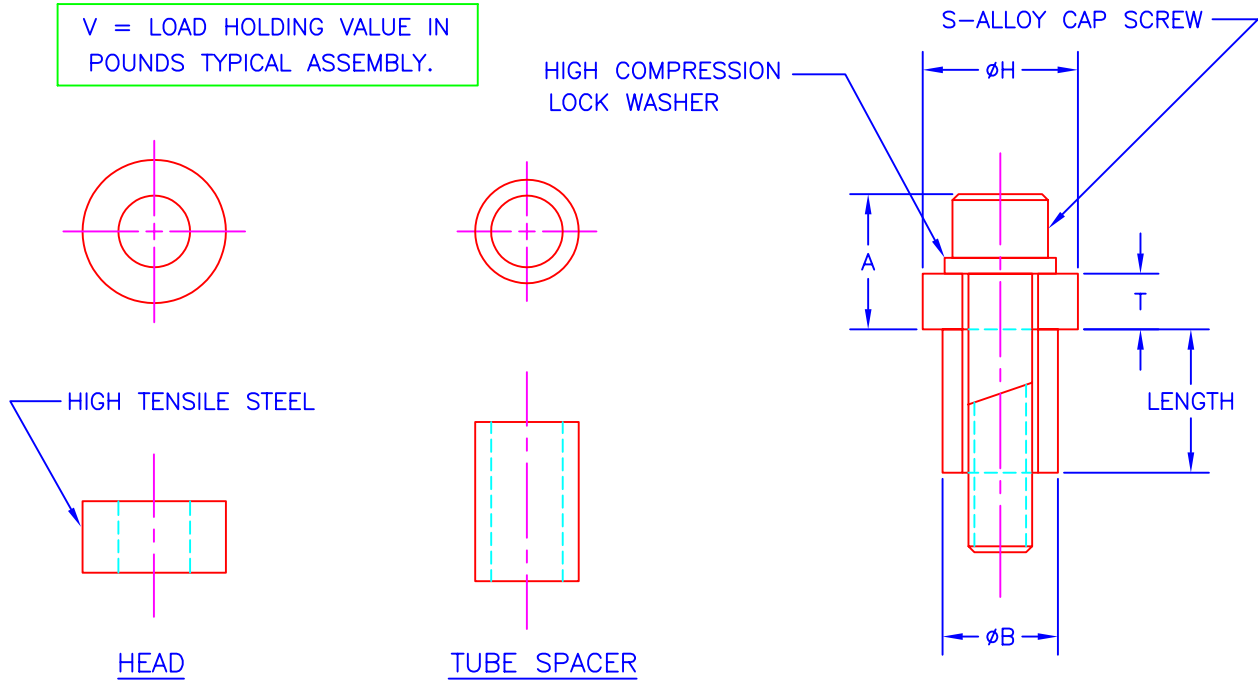


# TUBULAR DIE PAD RETAINERS

PRINTED COPY IS UNCONTROLLED

THESE DETAILS WITH THEIR COMPACT SIZE WERE DESIGNED FOR USE IN DIES WHERE SPACE IS OF THE UTMOST IMPORTANCE.

V = LOAD HOLDING VALUE IN POUNDS TYPICAL ASSEMBLY.



TUBE SPACER, HEAD, LOCK WASHER AND CAP SCREW INCLUDED IN ASSEMBLY.

| L<br>E<br>N<br>G<br>T<br>H | A = .641   | A = .719   | A = 1.125  | A = 1.281  | A = 1.501  | A = 1.938 |
|----------------------------|------------|------------|------------|------------|------------|-----------|
|                            | B = .56    | B = .62    | B = .75    | B = .87    | B = 1.00   | B = 1.25  |
| H = .812                   | H = .875   | H = 1.125  | H = 1.250  | H = 1.375  | H = 1.750  |           |
| S = 5/16-18                | S = 3/8-16 | S = 1/2-13 | S = 5/8-11 | S = 3/4-10 | S = 1"-8   |           |
| T = .250                   | T = .250   | T = .500   | T = .500   | T = .563   | T = .688   |           |
| V = 900                    | V = 1,400  | V = 2,600  | V = 4,000  | V = 5,800  | V = 10,300 |           |
| 1.00                       | J-51110    | J-51210    | J-51310    | J-51410    | J-51510    | J-51610   |
| 1.25                       | J-51111    | J-51211    | J-51311    | J-51411    | J-51511    | J-51611   |
| 1.50                       | J-51112    | J-51212    | J-51312    | J-51412    | J-51512    | J-51612   |
| 1.75                       | J-51113    | J-51213    | J-51313    | J-51413    | J-51513    | J-51613   |
| 2.00                       | J-51120    | J-51220    | J-51320    | J-51420    | J-51520    | J-51620   |
| 2.25                       | J-51121    | J-51221    | J-51321    | J-51421    | J-51521    | J-51621   |
| 2.50                       | J-51122    | J-51222    | J-51322    | J-51422    | J-51522    | J-51622   |
| 2.75                       |            | J-51223    | J-51323    | J-51423    | J-51523    | J-51623   |
| 3.00                       |            | J-51230    | J-51330    | J-51430    | J-51530    | J-51630   |
| 3.25                       |            | J-51231    | J-51331    | J-51431    | J-51531    | J-51631   |
| 3.50                       |            | J-51232    | J-51332    | J-51432    | J-51532    | J-51632   |
| 3.75                       |            | J-51233    | J-51333    | J-51433    | J-51533    | J-51633   |
| 4.00                       |            | J-51240    | J-51340    | J-51440    | J-51540    | J-51640   |
| 4.50                       |            | J-51242    | J-51342    | J-51442    | J-51542    | J-51642   |
| 5.00                       |            | J-51250    | J-51350    | J-51450    | J-51550    | J-51650   |
| 5.50                       |            | J-51252    | J-51352    | J-51452    | J-51552    | J-51652   |
| 6.00                       |            |            | J-51360    | J-51460    | J-51560    |           |

ADD THE SUFFIX C FOR USE IN CAST IRON OR S FOR STEEL, TO ASSURE PROPER SCREW LENGTH FOR THREADING INTO DIE. EXAMPLE J-51420-S