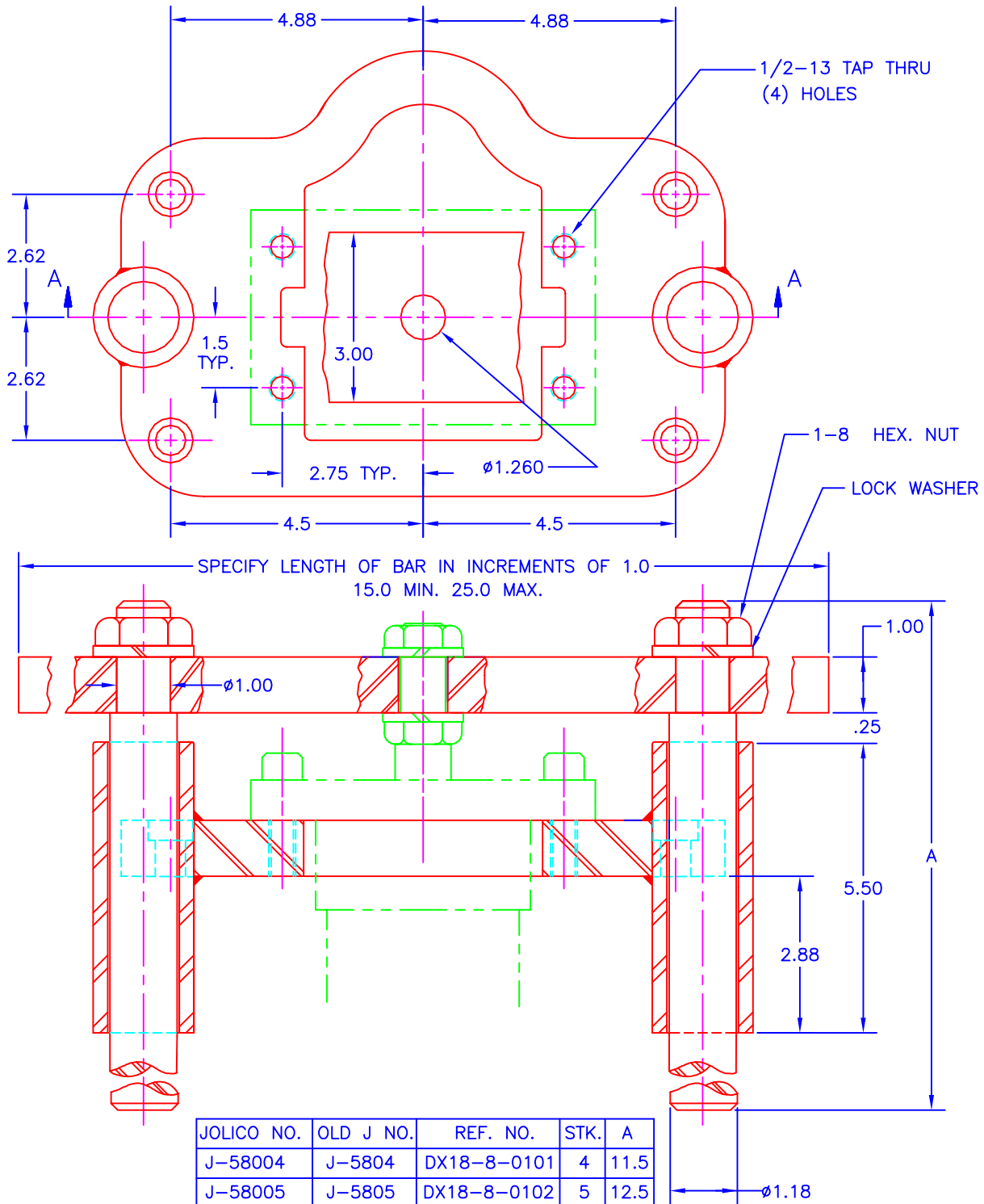


STANDARD "H" TYPE LIFTER

PRINTED COPY IS UNCONTROLLED

THESE DETAILS ARE A DIRECT STYLE OF PART LIFTER THAT IS LOCATED ON THE INTERIOR OF A DIE. IT IS DESIGNED TO ACCEPT A 3.25 DIA. BORE ROD FLANGE MOUNTED AIR CYLINDER



JOLICO NO.	OLD J NO.	REF. NO.	STK.	A
J-58004	J-5804	DX18-8-0101	4	11.5
J-58005	J-5805	DX18-8-0102	5	12.5
J-58006	J-5806	DX18-8-0103	6	13.5
J-58008	J-5807	DX18-8-0104	8	15.5
J-58010	J-5808	DX18-8-0105	10	17.5
J-58012	J-5809	DX18-8-0106	12	19.5