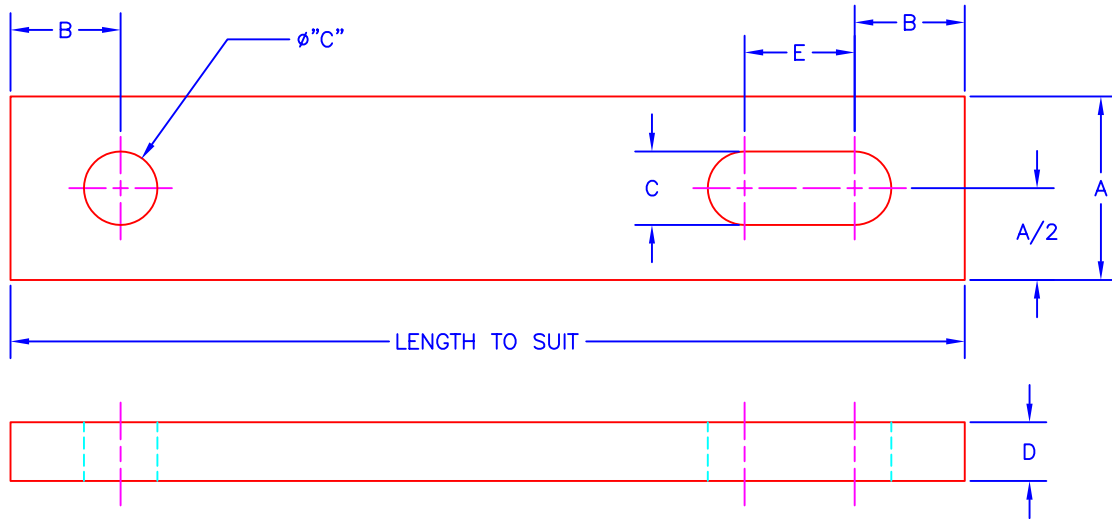


## SAFETY STRAPS

SAFETY STRAPS ARE USED FOR DIE STORAGE AND TRANSPORTING. THEY TIE THE PUNCH SHOE TO THE DIE SHOE.



**NOTE:**

WILL QUOTE AND MANUFACTURE ANY SPECIALS UPON CUSTOMER'S REQUEST.

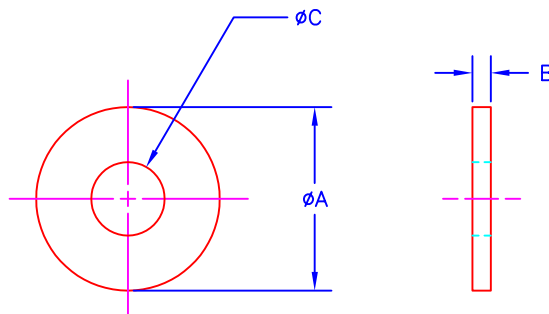
**ORDERING EXAMPLE:**

J-25472 X 12 LONG

JOLICO NO.	REF. NO.	REF. NO.	A	B	C	D	E	BOLT SIZE
J-25471	DK1-0104	TS-20	2.0	1.25	0.81	0.62	1.25	3/4-10
J-25472	DK1-0105	TS-25	2.5	1.25	0.81	0.62	1.25	3/4-10
J-25473	DK1-0106	TS-30	3.0	1.50	1.06	0.75	1.25	1-8
J-25474	DK1-0107	TS-35	3.5	1.75	1.31	0.75	1.25	1 1/4-7
J-25475	BU. STY. #1	—	2.0	1.00	0.78	0.75	0.50	3/4-10
J-25476	BU. STY. #2	—	3.0	1.50	1.03	1.00	0.50	1-8

## SAFETY STRAP WASHERS

THESE ITEMS ARE USED IN CONJUNCTION WITH THE SAFETY STRAPS ABOVE.



JOLICO NO.	REF. NO.	REF. NO.	A	B	C	USE WITH
J-25481	J-25471-A	DK1-0101	2.0	0.14	0.81	J-25471 & 2
J-25483	J-25473-A	DK1-0102	2.5	0.15	1.06	J-25473
J-25484	J-25474-A	DK1-0103	3.0	0.17	1.38	J-25474