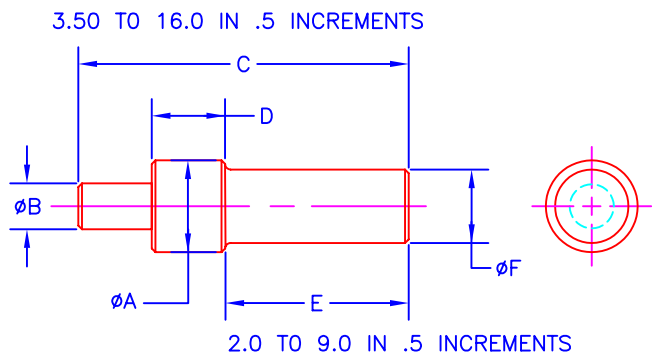
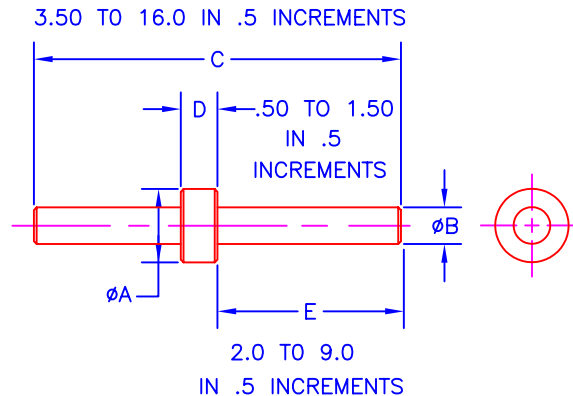


PLUNGERS

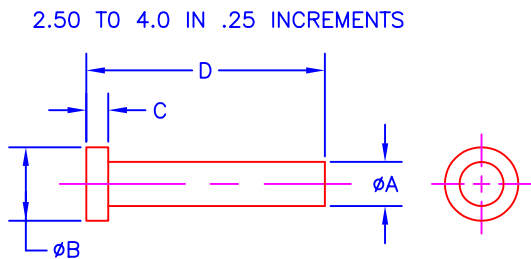
PRINTED COPY IS UNCONTROLLED



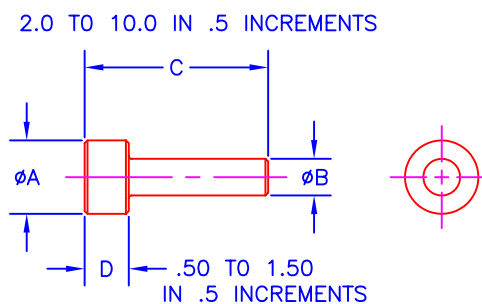
JOLICO NO.	A	B	C	D	E	F
J-86425	.75	.375	TO SUIT			.50
J-86426	1.00	.500				.75
J-86427	1.25	.625				1.00
J-86428	1.50	.750				1.25
J-86429	2.00	1.00				1.50



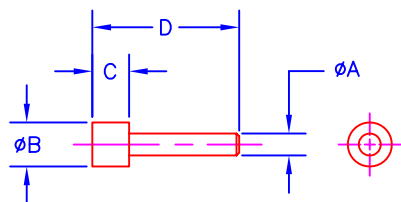
JOLICO NO.	A	B	C	D	E
J-86408	.75	.375	TO SUIT		
J-86409	1.00	.500			
J-86410	1.25	.625			
J-86411	1.50	.750			
J-86412	2.00	1.00			



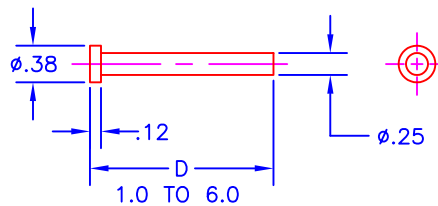
JOLICO NO.	A	B	C	D
J-86406	.50	.75	.25	TO SUIT
J-86407	.75	1.00	.31	



JOLICO NO.	A	B	C	D
J-86413	.75	.38	TO SUIT	
J-86414	1.00	.50		
J-86415	1.25	.62		
J-86416	1.50	.75		
J-86417	2.00	1.00		



JOLICO NO.	A	B	C	D
J-86419	.250	.50	.25 AND .375	1.0 TO 8.0
J-86420	.375	.50	.25 AND .375	1.0 TO 8.0
J-86421	.500	.75	.375 AND .50	2.0 TO 8.0
J-86422	.625	.75	.375 AND .50	2.0 TO 8.0
J-86423	.625	1.00	.50, .75 AND 1.00	2.0 TO 10.0
J-86424	.750	1.00	.50, .75 AND 1.00	2.0 TO 10.0



JOLICO NO.	D
J-86418	TO SUIT

MATERIAL AVAILABLE IN EITHER COLD ROLL STEEL OR WATER HARDENING TOOL STEEL. ADD - W TO CATALOG NUMBER IF WATER HARDENING TOOL STEEL IS REQUIRED.

ORDERING EXAMPLE

J-86426 A=1.0 B=.50 C=3.50 D=.68 E=2.0 F=.75-S-W

