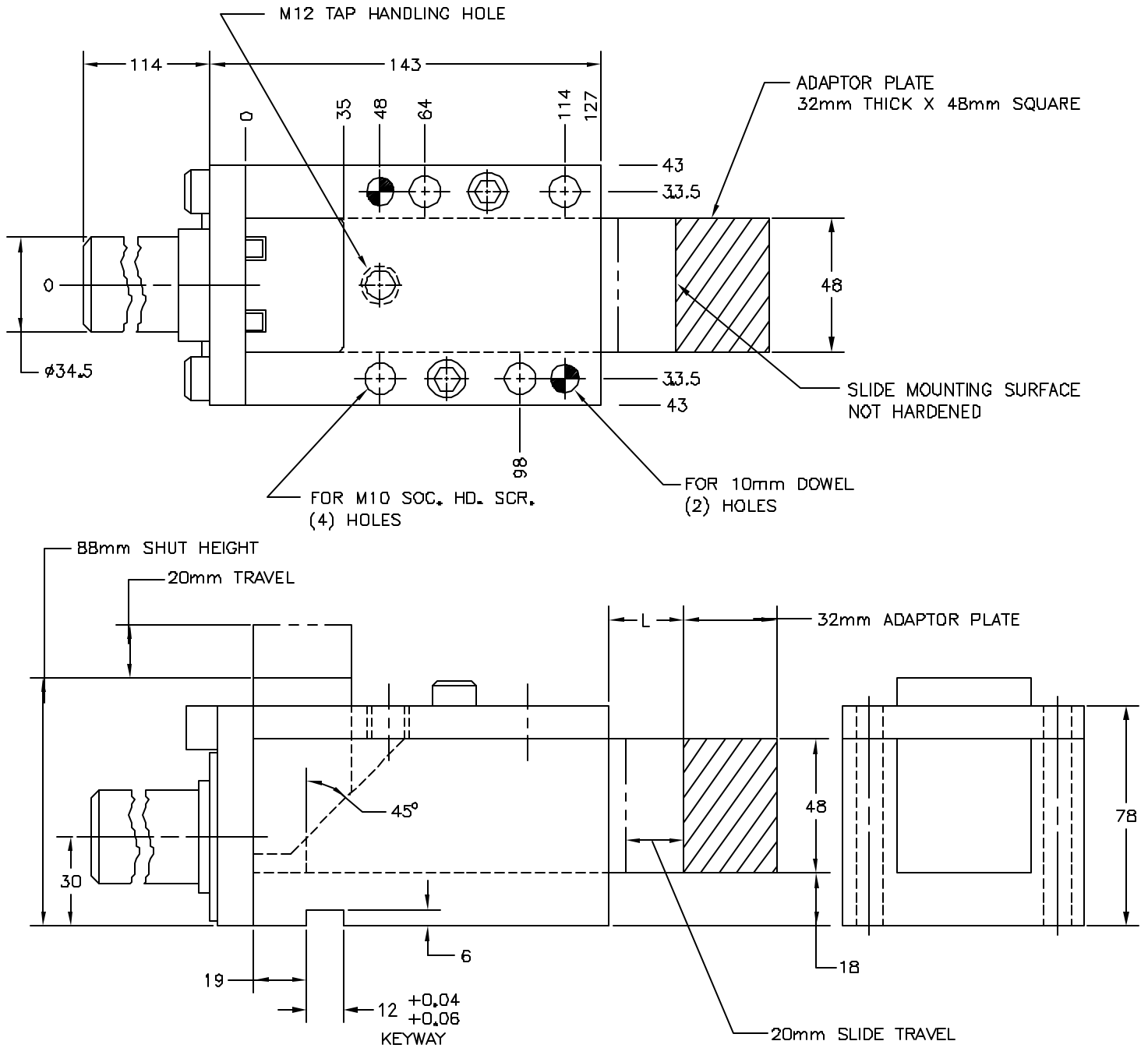


BOX CAM SLIDE UNIT



● MAX. TONNAGE 10 TONS.

- CAM UNIT IS SUPPLIED WITH:
- (4) M10 X 100mm LG. SOC. HD. SCR.
 - (2) $\phi 10$ X 40mm LONG PULL DOWEL
 - (1) 12 X 12 X 50mm LONG KEY
 - (1) 32mm THICK X 48mm SQUARE ADAPTOR PLATE

JOLICO NO.	CC REF..NO.	L
J-669801	19-202-1100	6
J-669801-L	19-202-1101	26

NOTE:
FOR CAM SLIDE UNIT WITHOUT THE ADAPTOR PLATE ADD THE SUFFIX (N) TO THE END OF THE ORDERING NUMBER.